

The Developer

Vishnu Infra, is a premium real estate development company in Tirupathi, engaged in developing best class residential communities with 11 years all together experience. Vishnu Infra's aim is to develop quality construction on the challenging real estate scene of Tirupathi. We are proud to announce, that, Vishnu Infra's landmark project "Signature Homes", with an eco-friendly living concept.

At Vishnu Infra, we have blended our traditional strength of property development with forward looking diversification into other verticals. With Vishnu Infra you can be confident that your requirements are fulfilled through our extensive understanding of the market and our wide ranging expertise in property investment management.

J & S ASSOCIATES
Architects | Engineers
Designers | Interiors

Manoja Designing & Printing - Ph: 98490 56622

SIGNATURE HOMES

ASSOCIATE WITH

RECKON
DEVELOPERS
TIRUPATI

Welcome to the paradise of nature

+91 7799277706

WWW.RECKONDEVELOPERSOFFICIAL.COM

This brochure is only a conceptual presentation of the project and not a legal offering. Developers reserve the right to change, alter, modify plan, elevation and specification time to time as deemed fit.

Welcome to
the GRAND LIFESTYLE

A whole new Spectrum of FREEDOM

Set among superb landscaping, you can take in the cool outdoor
ambience from within your villa. The plan of each villa exudes warmth
and expanse. It is designed for the modern family and is reated to fill
the space with natural light and air.

It is not just a wonderful blend of nature and architecture, but a
coming together of the enthusiasm of the Vishnu Infra team to create
homes that exceed expectations.



Club House

LEISURE FACILITIES :

- Multipurpose Hall with Dining Room for Party Area.
- Gym and Indoor Activity Area.
- Meeting and Reading Area.
- Landscape Greenery around the Club House Building.



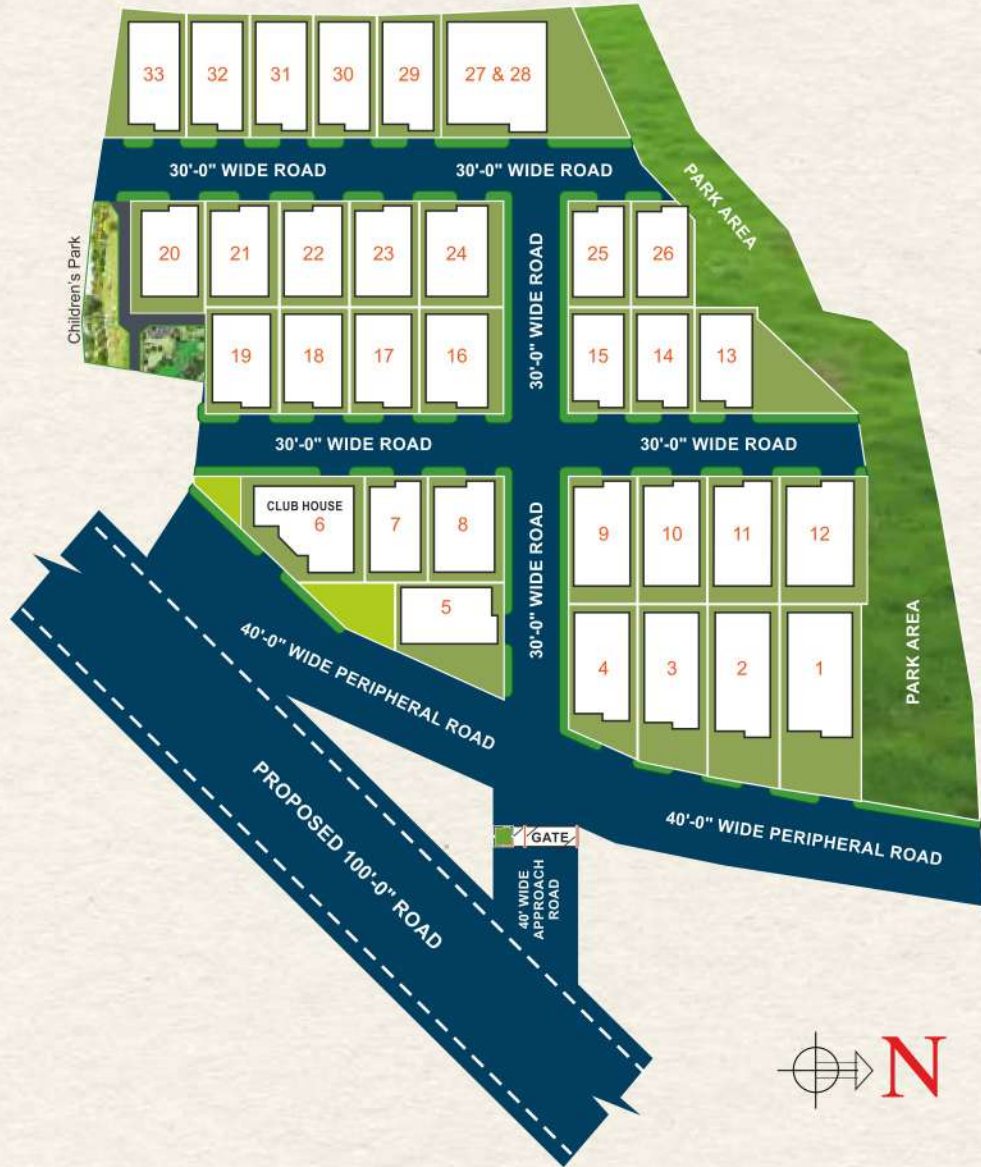
TUDA APPROVED PROJECT



DISTINCTIVE, ARCHITECTURAL LANDMARKS...
SET TO LEAVE YOU SPELLBOUND

Discover an edifice of EXCELLENCE

Vishnu Infra personifies efficient space planning, finest amenities and flawless execution that befits the lifestyle of the upper echelons. An epitome of exquisite elegance and absolute comfort, it is your very own retreat of quietude and privacy in the most happening part of the city.



Villas available in various sizes.

Experience the balance of light, ventilation and space for a more open and enhanced living experience. Built for the contemporary lifestyle, the villas are truly functional where every square foot plays a meaningful role. A spacious layout of each villa provides enough flexibility to suit your lifestyle. The practically designed living spaces are certain to become the heart of your home !!



EAST FACE DUPLEX HOUSE

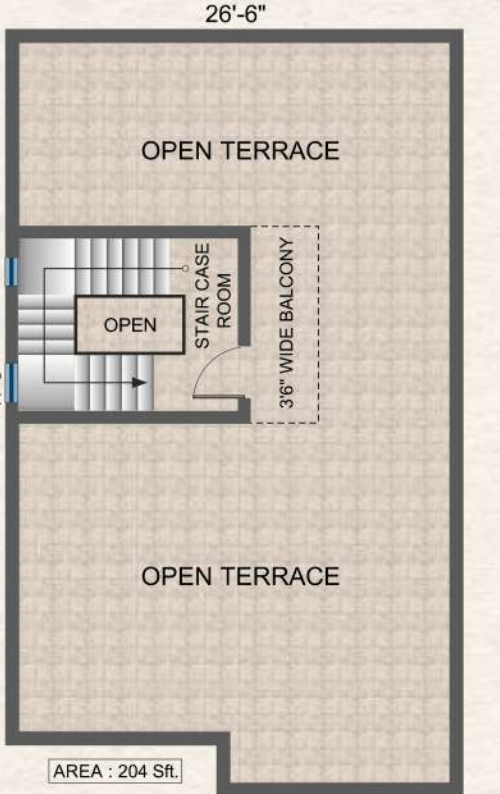
Plot area:
183.33 Sq.Yds.
Built up area:
2482 Sq.Ft.



GROUND FLOOR PLAN



FIRST FLOOR PLAN



TERRACE FLOOR PLAN

WEST FACE DUPLEX HOUSE



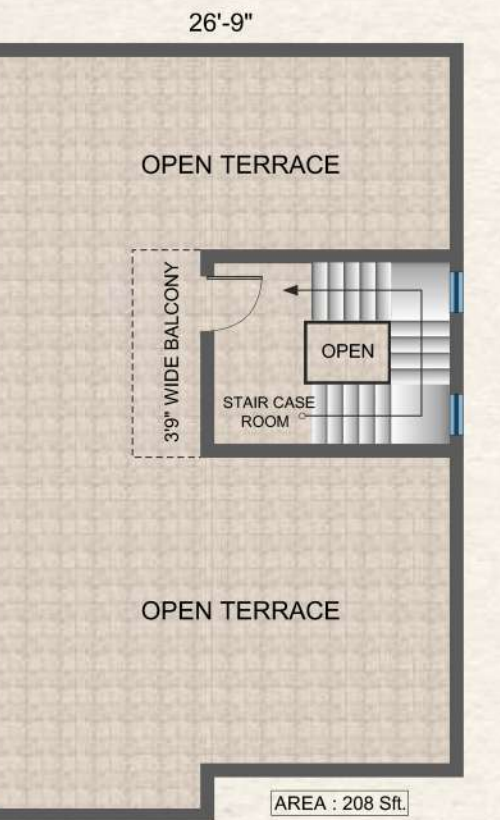
Plot area:
183.34 Sq.Yds.
Built up area:
2440 Sq.Ft.



GROUND FLOOR PLAN



FIRST FLOOR PLAN



TERRACE FLOOR PLAN



EAST FACING VILLAS ROW



PLOT Nos. 27 & 28 Villa



WEST FACING VILLAS ROW

SPECIFICATIONS

We are passionate about building homes that are in-sync with contemporary tastes and steadfastly believe that homes should age gracefully. And hence it is of utmost importance that the construction materials are chosen correctly. By using only the best quality materials, we give owners the confidence that their Villa will be a quality investment for years to come.

STRUCTURE : _____
R.C.C framed Structure.

SUPER STRUCTURE : _____
Red Brick Masonry 9" thick for External Walls and 4.5" thick Internal Walls.

FINISHING : _____
Cement Plastering Two Coats with Sponge Finish for External and Internal Walls.

Internal Walls : Plastic Emulsion Paint for Internal walls and Ceiling with two coats wall putty.

External Walls : Combination of Textured and Smooth wall putty surfaces for front Elevation walls and Weather proof acrylic Emulsion Paint all external walls.

WOOD WORK : _____
Main Door : Teak frame with Designed Teak wood Paneled Shutters with Matt Finish with Good quality S.S.Coated Brass Fixtures with Locking System.

Internal Door : Teak frame with Designed Flush Door Shutters with Polish Finish with Good quality S.S. Coated Brass Fixtures.

Windows : Sliding UPVC Frames with Mosquito Panel with designed M.S. Plain Safety Grills.

Ventilators : UPVC/Aluminum Frames with Exhaust Fan provision with Glass Louver or Open able Shutters.

FLOORING : _____
Living, Drawing, Dining, Lounges with 2'6"x2'6" size Vitrified Tiles with 4" skirting, Wooden laminated flooring for Master Bed Room, Bed Rooms, Kitchen with 20"x20" size Vitrified Tiles Balcony, Toilet, Wash Area with Anti Skid Tiles, Staircase with Granite Stone Flooring, Parking with Colored Cement Tiles.

DADOING : _____
Kitchen : Polished Granite Stone Dado Counter with S.S. Sink. Ceramics Tile Dado above Counter up to Window Height.

Toilet : Glazed Ceramics Tile Dado up to Door Height.

Wash Area : Glazed Ceramics Tile Dado up to 30" Height.

RAILING : _____
Staircase : S.S. Glass Railing with S.S. Top Rail.
First Floor Verandah : S.S. Glass Railing with S.S. Top Rail.

Terrace Floor : Synthetic Enamel Painted M.S. Glass Railing with M.S. Top Rail.

ELECTRICAL : _____
PVC Insulated Fire retardant Copper Wires with Modular Fixtures of Standard Make.

3-Phase Electrical Supply with Individual Meter for each House with MCB Distribution Board.

Power Points : For A.C. in all Bed Rooms, Geyser & Exhaust Fan Points for all Toilets,

Aqua Guard, Chimney, Refrigerator, Microwave Oven, Mixer Grinder Points in Kitchen Washing Machine point in wash area.

TELEVISION : _____
Ground Floor : Provision for Cable T.V. / DTH in Drawing or Living Room.

First Floor : Provision for Cable T.V. / DTH in Lounge or Master Bed Room.

INTERCOM : _____
Intercom Connection from Security Guard Room to Each Villa.

TELEPHONE& NET : _____
Ground Floor : Telephone Point in Drawing or Living Hall.

First Floor : Telephone Point in Lounge or Study Area.

PLUMBING : _____
C.P.V.C. Water lines with C.P. Plumbing fixtures of Standard Make.

P.V.C. Drain lines for Drainage and Rain Water.

Chrome Plated Concealed Diverter Mixer with Shower for all Toilets.

2 way Tap with Health Faucet for all Commodes.

Long Neck Pillar Cock Tap for all Wash Basins.

Long Body Taps 2 Nos. for Kitchen Sink. Tap provision for Wash Area, Washing Machine & Gardening.

SANITARY : _____
White Color Vitreous Ceramic Sanitary Fixtures of Standard Make.

Wall Mounted EWC with Concealed Flush Tank for Master Bed Room Toilet.

Floor Mounted Single Piece EWC with Flush Tank for remaining Toilets.

Glass Wash Basin for Dining.



**Blossoming
of a greener
and happier
tomorrow.**

ADDITIONAL FEATURES :

- ◆ Gated Community with Round 'O' Clock Security
- ◆ Entrance Arch with Security Guard Room
- ◆ Enabled Power Back-Up Generator for Street Lighting, Club House, Security Guard Area & Water Pumping Motors
- ◆ Intercom Facility from Security Room to Each Villa
- ◆ Community Fenced with Solar and C.C. Camera Surveillance System
- ◆ Specified Children Play Area
- ◆ Avenue Plantation and Greenery Landscape

